

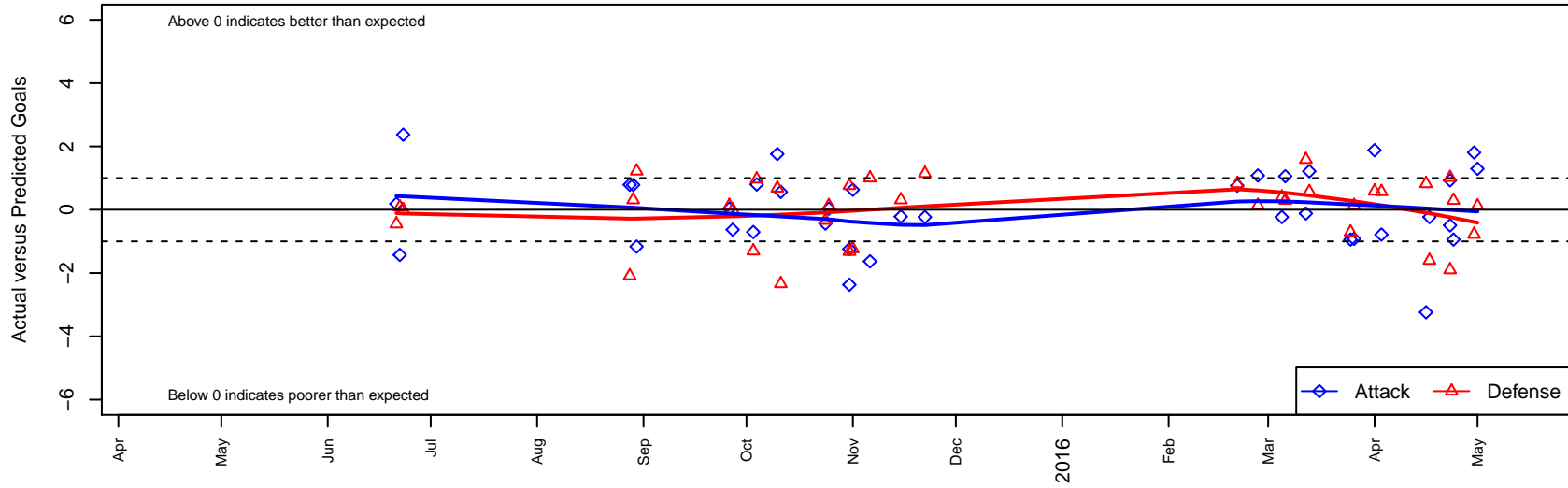
WA East G01

Washington East SC
Spokane, WA
G01 total strength=1406
attack=10.01 defense=6.68
fall league = PSPL WSPL U14, PSPL WSPL 1

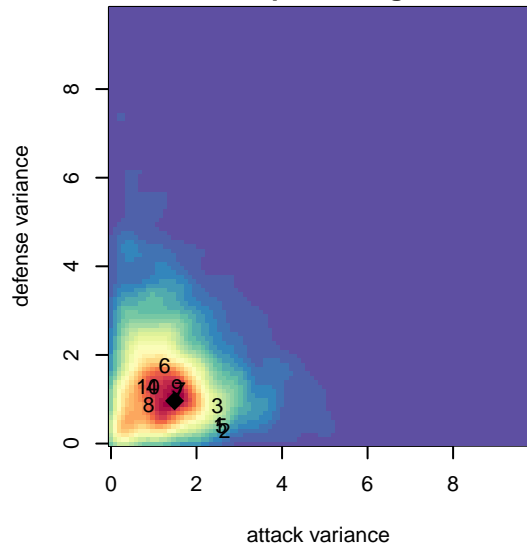
alt names used:

Venues played:
2015 US Club Regionals U13
2015 NWCL U14
2015 PSPL WSPL U14
2015 PSPL WSPL 1 East U15
2015 WA Cup GU15 Gold/Silver U15

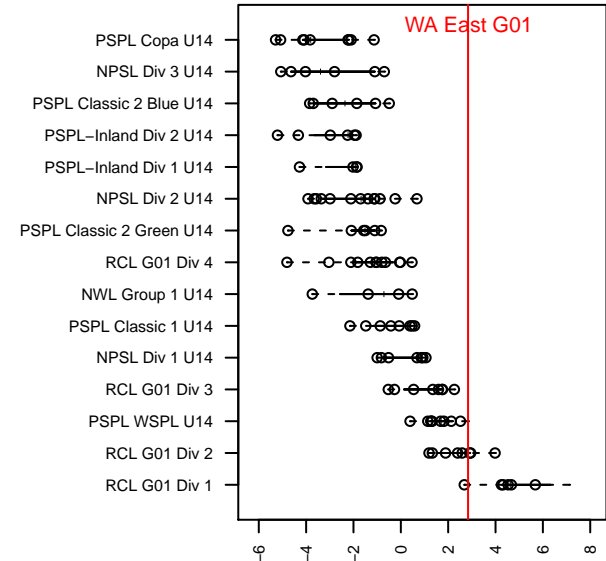
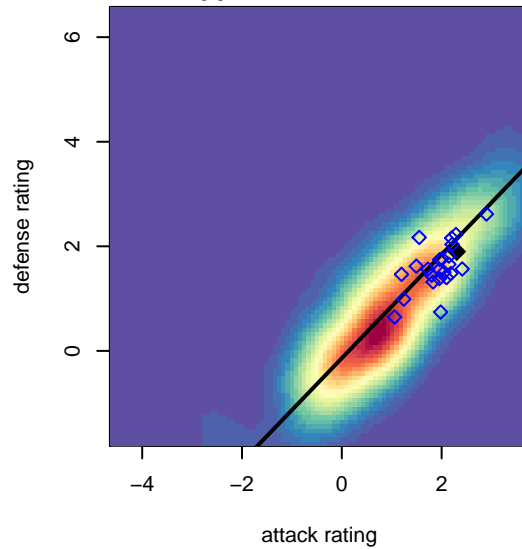
WA East G01
Dots are actual minus expected GF (blue circles) and GA (red triangles).
Blue line is smoothed change in attack strength. Red is smoothed change in defense strength.



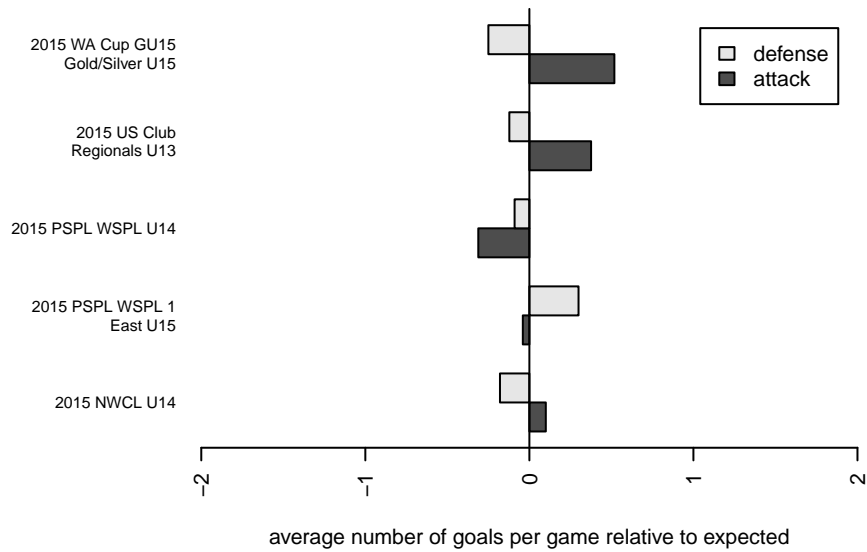
**attack and defense variance (black dot)
relative to other teams
and top 10 in region**



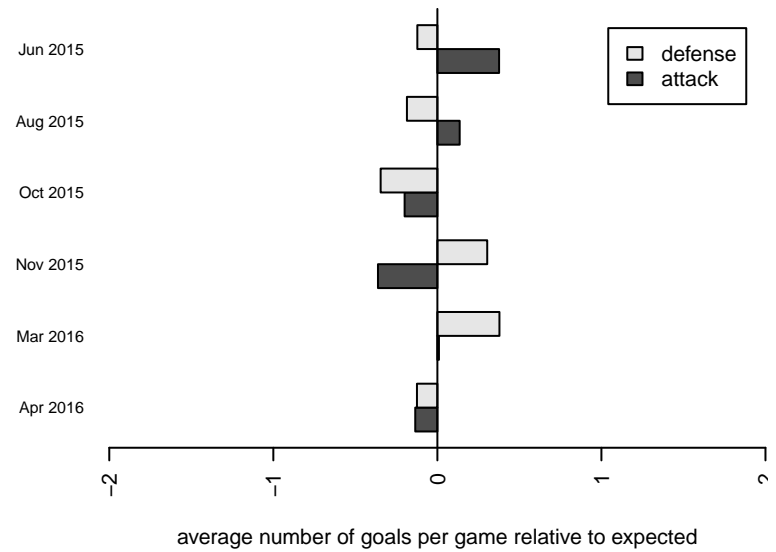
**attack and defense rating
relative to others at age
and all opponents in last 13 months**



Performance relative to 13 month average



Performance relative to 13 month average



date	home		away		venue	pred.home	pred.away
2016-05-01	LWPFC White Barracudas G00	1	WA East G01	4	2015 WA Cup GU15 Gold/Silver U15	1.12	2.71
2016-04-30	PS Slammers Black G00	2	WA East G01	4	2015 WA Cup GU15 Gold/Silver U15	1.22	2.19
2016-04-24	FC Spokane Black G00	1	WA East G01	1	2015 WA Cup GU15 Gold/Silver U15	1.29	1.94
2016-04-23	Idaho Thunder G00	0	WA East G01	6	2015 WA Cup GU15 Gold/Silver U15	1.02	5.07
2016-04-23	WA East G01	1	CWSA Navy G00	3	2015 WA Cup GU15 Gold/Silver U15	1.50	1.10
2016-04-17	WA East G01	2	CDA Sting -Unk G00	3	2015 PSPL WSPL 1 East U15	2.23	1.40
2016-04-16	Spokane Foxes Platinum G00	0	WA East G01	1	2015 PSPL WSPL 1 East U15	0.82	4.24
2016-04-03	Breakers Puzio G00	0	WA East G01	1	2015 PSPL WSPL 1 East U15	0.57	1.79
2016-04-01	WA East G01	3	Spokane Foxes Premier G00	1	2015 PSPL WSPL 1 East U15	1.12	1.58
2016-03-26	WA East G01	1	Cheney Storm FC G00	1	2015 PSPL WSPL 1 East U15	1.92	1.13
2016-03-25	FC Spokane Black G00	2	WA East G01	1	2015 PSPL WSPL 1 East U15	1.29	1.94
2016-03-13	WA East G01	3	Breakers Puzio G00	0	2015 PSPL WSPL 1 East U15	1.79	0.57
2016-03-12	Spokane Foxes Premier G00	0	WA East G01	1	2015 PSPL WSPL 1 East U15	1.58	1.12
2016-03-06	WA East G01	3	FC Spokane Black G00	1	2015 PSPL WSPL 1 East U15	1.94	1.29
2016-03-05	CDA Sting -Unk G00	1	WA East G01	2	2015 PSPL WSPL 1 East U15	1.40	2.23
2016-02-27	Cheney Storm FC G00	1	WA East G01	3	2015 PSPL WSPL 1 East U15	1.13	1.92
2016-02-21	WA East G01	5	Spokane Foxes Platinum G00	0	2015 PSPL WSPL 1 East U15	4.24	0.82
2015-11-22	WA East G01	2	MVP Marauders Navy G01	0	2015 PSPL WSPL U14	2.23	1.14
2015-11-15	ISC Gunners A G01	1	WA East G01	2	2015 PSPL WSPL U14	1.31	2.22
2015-11-06	FC Spokane Black 1 G01	0	WA East G01	0	2015 PSPL WSPL U14	1.00	1.63
2015-11-01	CDA Sting -Unk G01	2	WA East G01	3	2015 PSPL WSPL U14	0.76	2.37
2015-10-31	WA East G01	1	ASE Emerald G01	3	2015 PSPL WSPL U14	2.24	1.68
2015-10-31	WA East G01	0	CDA Sting -Unk G01	0	2015 PSPL WSPL U14	2.37	0.76
2015-10-25	CWSA Navy G01	1	WA East G01	2	2015 PSPL WSPL U14	1.13	1.97
2015-10-24	WA East G01	2	Spokane Foxes Premier G01	1	2015 PSPL WSPL U14	2.44	0.66
2015-10-11	Spokane Foxes Premier G01	3	WA East G01	3	2015 PSPL WSPL U14	0.66	2.44
2015-10-10	ASE Emerald G01	1	WA East G01	4	2015 PSPL WSPL U14	1.68	2.24
2015-10-04	Indie Chicas G01	0	WA East G01	3	2015 NWCL U14	0.97	2.20

date	home		away		venue	pred.home	pred.away
2015-10-03	Crossfire OR United ECNL G01	4	WA East G01	0	2015 NWCL U14	2.69	0.70
2015-09-27	WA East G01	1	FC Spokane Black 1 G01	1	2015 PSPL WSPL U14	1.63	1.00
2015-09-26	WA East G01	2	CWSA Navy G01	1	2015 PSPL WSPL U14	1.97	1.13
2015-08-30	Harbor Premier Green G01	0	WA East G01	0	2015 NWCL U14	1.22	1.17
2015-08-29	ISC Gunners A G01	1	WA East G01	3	2015 NWCL U14	1.31	2.22
2015-08-28	THUSC United Mercury Reserves G01	3	WA East G01	2	2015 NWCL U14	0.91	1.21
2015-06-23	FC Spokane Black 1 G01	1	WA East G01	4	2015 US Club Regionals U13	1.00	1.63
2015-06-22	Three Rivers SC Black RCL G01	1	WA East G01	1	2015 US Club Regionals U13	1.09	2.43
2015-06-21	WA East G01	4	CDA Sting Eindhoven G01	1	2015 US Club Regionals U13	3.81	0.55